



GMT MONTHLY MEMBERSHIP PROGRESS REPORT

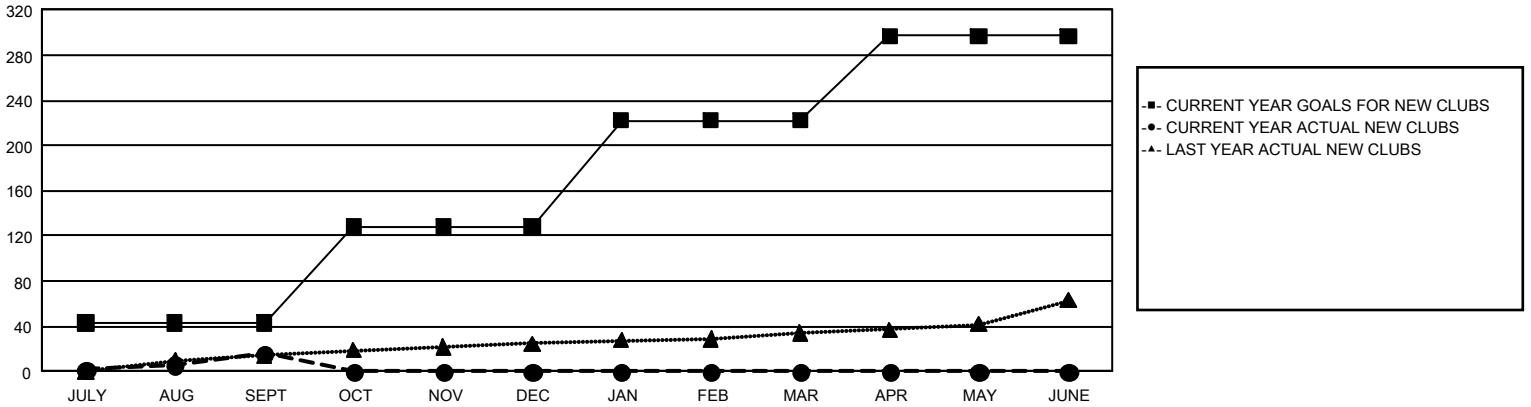
GAT Constitutional Area 1

Results as of: 9/30/2023

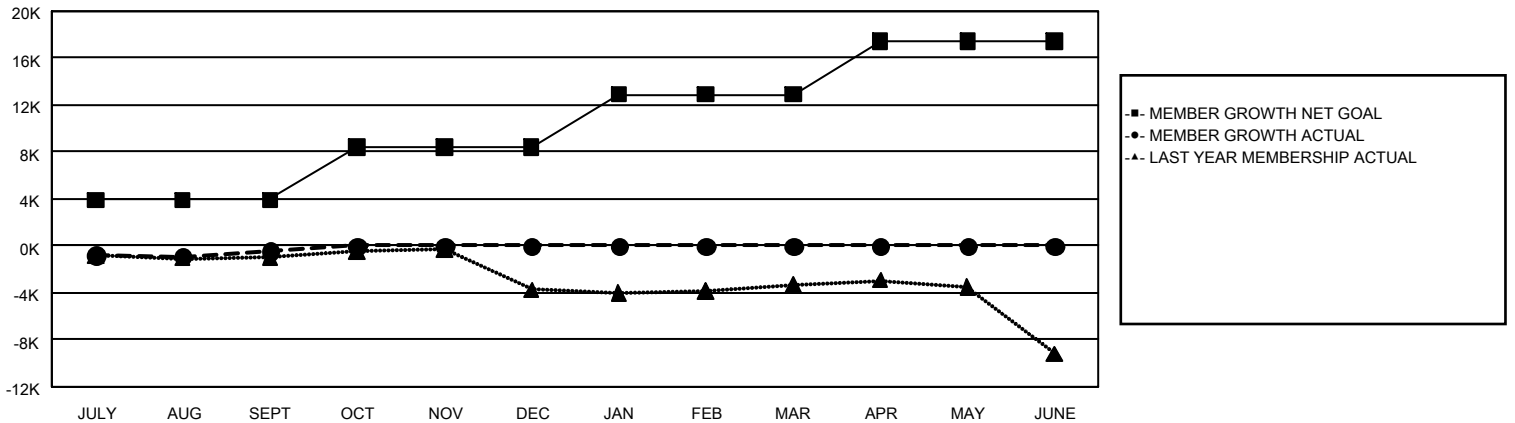
REPORT DOES NOT INCLUDE CLUBS IN UNDISTRICTED AREAS.

Clubs				Members			
RESULTS FOR 2023-2024				RESULTS FOR 2023-2024			
QUARTER	NEW CLUB GOAL	NEW CLUBS	DROPPED CLUBS	QUARTER	MEMBER GROWTH NET GOAL	MEMBER GROWTH ACTUAL	DROPPED MEMBERS ACTUAL (including transfers)
JULY/AUG/SEPT	43	16	62	JULY/AUG/SEPT	3,929	8,134	7,639
OCT/NOV/DEC	85	0	0	OCT/NOV/DEC	4,484	0	0
JAN/FEB/MAR	94	0	0	JAN/FEB/MAR	4,476	0	0
APR/MAY/JUNE	75	0	0	APR/MAY/JUNE	4,529	0	0

GOALS AND ACTUAL NEW CLUBS CUMULATIVE



GOALS AND ACTUAL MEMBERS CUMULATIVE



DROPPED CLUBS: 62	2,817 CLUBS OF 10,084 ADDED 1 OR MORE NEW MEMBERS	<u>GENDER DISTRIBUTION</u> MALE 169,304 (63.75%) FEMALE 96,137 (36.20%)
<u>DROPPED MEMBERS</u> DECEASED 1,004 CLUB CANCELLED 116 OTHER 6,579 <hr/> TOTAL 7,699	CLICK HERE FOR CUMULATIVE MEMBERSHIP DATA	TOTAL FAMILY UNIT MEMBERS 51,708 FAMILY MEMBERS PAYING HALF DUES 26,604